

WebServices at the BiBiServ

BiBiServ

`http://bibiserv.techfak.uni-bielefeld.de`

1. founded in 1996; funded by DFG as part of CeBiTec

BiBiServ

`http://bibiserv.techfak.uni-bielefeld.de`

1. founded in 1996; funded by DFG as part of CeBiTec
2. now: offers over 20 bioinformatic tools via html based interface

BiBiServ

`http://bibiserv.techfak.uni-bielefeld.de`

1. founded in 1996; funded by DFG as part of CeBiTec
2. now: offers over 20 bioinformatic tools via html based interface
3. soon: will offer tools as html **and** Webservice

BiBiServ - Statistics

<http://bibiserv.techfak.uni-bielefeld.de>

Tool Access Statistic for 2004

[January](#) [February](#) [March](#) [April](#) [May](#) [June](#) [July](#) [August](#) [September](#) [October](#)

ALTAVIST	1420
Agenda	552
DCA	1768
DIALIGN	16077
E2G	298
GeneFisher	36625
JALI	216
MFold	1596
Paper2Sequence	55
Predictor	3423
RNAforester	537
RNAhybrid	2390
RNAmovies	2101
RNAshapes	76
ROSE	1542
Reputer	3555
SplitsTree	2021
TSDA	17
paRNAss	379
pknotsRG	583
TOTAL	75231

[graphical view](#)

last modified Sun Oct 3 23:59:59 MEST 2004

BiBiServ - Administration

`http://bibiserv.techfak.uni-bielefeld.de`

1. tools developed by different groups of university bielefeld

BiBiServ - Administration

`http://bibiserv.techfak.uni-bielefeld.de`

1. tools developed by different groups of university bielefeld
2. policies: Availability, Tool release, Tool selection

BiBiServ - Administration

`http://bibiserv.techfak.uni-bielefeld.de`

1. tools developed by different groups of university bielefeld
2. policies: Availability, Tool release, Tool selection
3. administrative participants: Alexander Sczyrba, Jan Krüger, Henning Mersch

WebServices at BiBiServ

1. diploma thesis containing library and example WebService

WebServices at BiBiServ

1. diploma thesis containing library and example WebService
2. based on RPC-style
3. focus here: server side

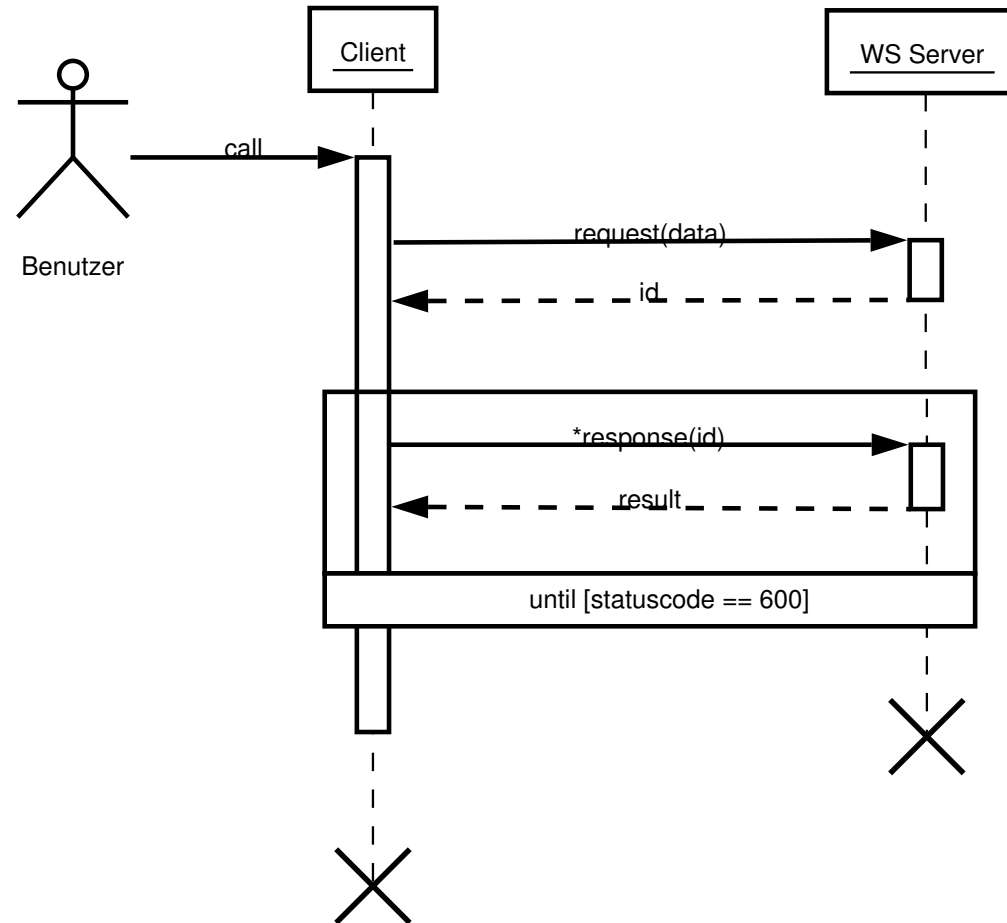
WebServices at BiBiServ

1. diploma thesis containing library and example WebService
2. based on RPC-style
3. focus here: server side
4. based on: Apache Tomcat, Apache AXIS

WebServices at BiBiServ

1. diploma thesis containing library and example WebService
2. based on RPC-style
3. focus here: server side
4. based on: Apache Tomcat, Apache AXIS
5. asynchronous WebServices support via *Request/Reply operation with polling*

Request/Reply operation with polling

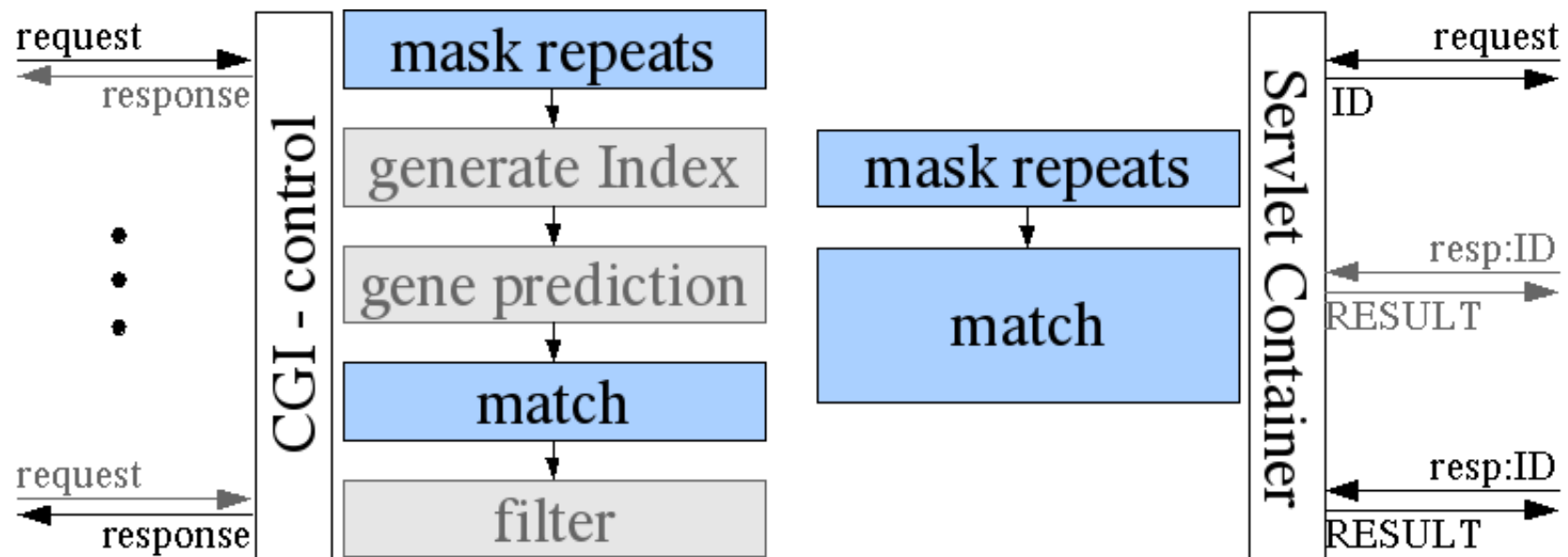


BiBiWS - state

1. id management done in a database
2. state: production implementation
3. wsdl files of services are available under
`http://bibiserv.techfak.uni-bielefeld.de/wsdl`
4. problems with availability : WS Server (until now) only available internal
5. problem to discuss (later): *complexData* encoding
6. workshop using BiBiWS tomorrow with focus on server side with simple JAVA client

provided WebServices : E2G

Efficiently Mapping large EST and cDNA sets to Genomic Sequences



- **INPUT:** single sequence and match parameters
- **OUTPUT:** tab separated table of matches

provided WebServices : ...

- **REPuter** -

`http://bibiserv.techfak.uni-bielefeld.de/reputer/`

- **INPUT**: single sequence and replead parameters
- **OUTPUT**: tab separated list of found repeats

- **BLAST** - sample Webservices

- **INPUT**: single sequence and blast parameters
- **OUTPUT**: blast XML

- ...

Final

That's it !